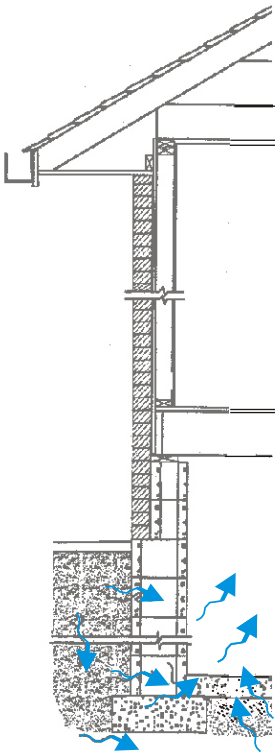


What Is RADON?



Radon is a tasteless, odorless, colorless, naturally occurring radioactive gas. It comes from the breakdown of uranium in rocks and soil.

Radon enters your home through hollow block walls, cracks in the foundation floor and walls, and openings around floor drains, pipes and sump holes.

Did you know...

After smoking, radon is the second leading cause of lung cancer, and is estimated to cause approximately 15,000 deaths in the United States annually.

An estimated 40 percent of Pennsylvania homes have radon levels greater than the EPA guideline of 4 pCi/L.

How Do You Know If Your Home Has High Radon Levels?

You and your family are most likely to get your greatest exposure to radon at home.

The only way to know the radon level in your home is to test.

Testing is easy and inexpensive.

You may perform the test yourself using a Pennsylvania certified test device:



- ◆ purchased at a home center/hardware store,

or

- ◆ from a Pennsylvania certified laboratory.

-OR-

You may hire a Pennsylvania certified tester to perform the test.

There are two types of radon tests:

- ◆ **Short-Term Test:** These tests are placed for 2 - 7 days and provide a quick screening result. Closed house conditions must be maintained during these tests.

- ◆ **Long-Term Test:** These tests are placed from 3 - 12 months and provide a long-term average of the home's radon level. Closed house conditions are not required for these tests.

The cost of a test is about \$20 - \$30 for a do-it-yourself test, and about \$90 - \$120 for a certified tester to test your home.

IMPORTANT NOTICE

Pennsylvania law requires anyone (except the owner/occupant of the building) performing radon testing, mitigation or laboratory analysis be certified with the Department of Environmental Protection (DEP). To verify certification call 1-800-23-RADON or go online at www.state.pa.us (Keyword "DEP Radon") "Radon Services Directory."

What Do Your Test Results Mean?

The U. S. Environmental Protection Agency (EPA) recommends that if your initial radon test result shows a level of 4 pCi/L or higher, you should confirm the result with a follow-up test. For homes with radon levels of 4 pCi/L or higher, the EPA recommends that you have a radon mitigation system installed to lower the radon levels.

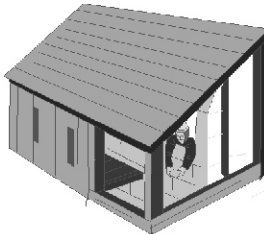
When selling a home, the seller must disclose any known radon test results to the buyer.

How Can You Reduce Your Radon Levels?

Radon levels can be reduced by installing a radon mitigation system. The most common type of system uses an arrangement of plastic pipes and a fan to vent the radon gas to the outside air. The typical cost of a radon mitigation system is from \$700 to \$1,200.

Building A New Home?

Be sure to consider building with Radon Resistant New Construction Techniques. These new techniques can be effective in preventing radon entry and installing these features at the time of construction is easier and less expensive than retrofitting an existing home.



For Further Information

PA DEP
Radon Website:
www.state.pa.us(Keyword“DEP Radon”)

Radon Toll Free Line:
1 - 800 - 23RADON

EPA
Radon Website:
[Http://www.epa.gov/iaq/radon](http://www.epa.gov/iaq/radon)
EPA Radon Hotline:
1 - 800 - SOS-RADON

For more detailed information the following documents are available free of charge from DEP:

Pennsylvania's Home Buyer's and Seller's Guide

Consumer's Guide to Radon Reduction

Pennsylvania's Citizen's Guide to Radon

How Does Your Home Measure Up?

TEST for RADON TODAY!!

Call: 1-800-23RADON

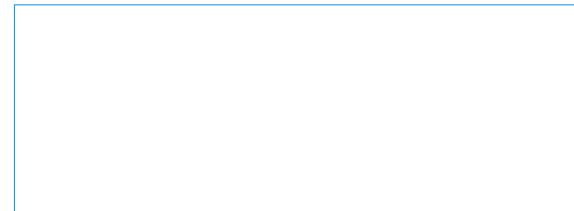
Pennsylvania Department
of

Environmental Protection

1- 800-237-2366

www.state.pa.us

(Keyword “DEP Radon”)



Bureau of Radiation Protection



2940-PA-DEP3091 Rev.10/2003

What You Should Know About



Commonwealth of Pennsylvania
Department of Environmental Protection
Bureau of Radiation Protection

Edward G. Rendell, Governor Kathleen A. McGinty, Secretary