

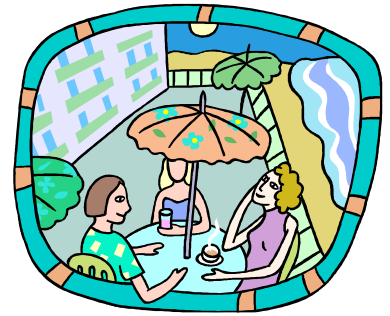
RECYCLING IN RESTAURANTS & TAVERNS

CITY OF HARRISBURG
DEPARTMENT OF PUBLIC WORKS

Since restaurants and taverns are points of large scale consumption, recycling should be a key component of operations.

The Requirements

The Municipal Waste Planning, Recycling and Waste Reduction Act of 1988 (Act 101) requires commercial, institutional and municipal establishments located in Pennsylvania's mandated municipalities to recycle high-grade office paper, corrugated paper, aluminum and leaf waste. In addition, establishments must recycle any other materials included in the municipality's recycling ordinance or regulations, which may include glass, newsprint, plastics, and/or steel and bimetallic cans. As a mandated municipality, businesses and institutions with facilities located within the City of Harrisburg must implement recycling programs.



The City of Harrisburg's recycling requirements are as follows:

- All commercial, institutional and municipal establishments must source separate the following materials:
 - High grade office paper
 - Corrugated cardboard
 - Glass containers
 - Aluminum cans
 - Any other recyclables that may be designated by the City
- Those served by the City's curbside program must set their materials at the curb in the City's blue recycling bins for collection.
- Those not served by the City's curbside program must arrange for the collection and recycling of all designated materials.
- All commercial, institutional and municipal entities must provide written documentation as to the type and weight of materials recycled annually. Reports are due to the City by January 15 of each year on a form provided by the City.

Recycling and Reuse in Restaurants and Taverns

Restaurants and taverns can reduce their waste considerably by employing both recycling and reuse. For example, restaurants that use disposable napkins, utensils or placemats can reduce waste volume by switching to reusable items. Many restaurants and bars also generate significant quantities of glass, aluminum, steel, plastics and corrugated cardboard. Some methods for handling of restaurant waste might include:

- Recycling of corrugated cardboard, glass, metals and plastic. If space is a problem, specially designed equipment such as can, glass and plastic crushers are available to reduce the volume of recyclable materials.
- Replacing beverage bottles and cans. Many beers and most soft drinks can be served on-tap, reducing both the cost of buying beverages and disposing or recycling cans and bottles. Even wine can be stored in bulk in some circumstances.



Recycling Works

CITY OF HARRISBURG
DEPARTMENT OF
PUBLIC WORKS

1690 S. 19th Street
Harrisburg, PA 17104

Phone: (717) 236-4802

Fax: (717) 236-9051

- Replacing disposable items (cups, utensils, trays, dishes and single-serving condiment packages) with reusable items.
- For eat-in restaurants and hotels, use of reusable napkins and dinnerware, placemats and tablecloths. Switching from disposables may add to dishwashing and laundry costs, but will save on the purchase of paper goods and avoid waste disposal costs.
- For carryout and fast food, selecting the minimum appropriate packaging for food.
- Buying in bulk to reduce container waste, but not buying too much of a product that might spoil. Buy locally to minimize transportation costs.
- Recycling of polystyrene containers, as some fast food chains are doing. Consider contacting your container supplier about the feasibility of such a project. (NOTE: In Pennsylvania, DART Container works with its customers to recycle polystyrene.)
- Asking suppliers to provide you with products that are packaged in materials such as recyclable or reusable paper, glass, steel, aluminum or plastic.
- Donating useful, outdated stock and leftover foods to food pantries, charities and shelters, or composting food waste.
- Collecting and sending used grease to a renderer.



Steps for Successful Recycling in Restaurants and Taverns

1. Perform a waste assessment. Walk through your operation noting what type of waste is discarded in each area. A walk-through will help you determine which types of containers are needed.
2. Based on the results of the waste assessment, set up your recycling program. Some issues to consider include:
 - Ensuring that recycling and trash bins look different from each other and are clearly marked. Both types of bins should be conveniently located in the kitchen and bar areas so that employees will use them.
 - Where space is an issue, researching the feasibility of investing in a mini-cardboard baler, can crushers and glass pulverizers. This equipment will allow for efficient management of space and may increase the likelihood of favorable recycling service contracts.
 - Letting your patrons know that you recycle. If your establishment is self-serve, post signs letting customers know that you are recycling and what they should do with their bottles and cans. Either put out a bin for these items, or have customers leave them on a designated counter for collection by your staff.



3. Inform employees about proper recycling procedures by issuing a memo and reviewing procedures at staff meetings or at the beginning of shifts. Take time to train employees about where to place materials. Be specific, using product names used in your establishment. For example, cans from the XYZ Company get recycled, but the ABC company containers go into the trash. Make up a "Dos and Don'ts" list for recycling and post it on the bulletin board or at workstations.

Make sure to follow up to ensure that procedures are being followed and further educate employees as necessary.

4. Set up a log book or a receipt system to record the volume of recyclables leaving the premises. This will enable you to receive proper compensation for your materials and to take appropriate action if volumes decrease.
5. Include recycling information in your orientation for new employees.
6. After policies have been established, explain the recycling program to custodial staff. Train them by showing them what to do with new containers, how to collect waste separately and where to take sepa-

rated materials. For a 24-hour operation, plan pick-ups on appropriate shifts so that you do not have a problem with overflowing containers.

If your restaurant or tavern is located in a facility with multiple establishments such as a mall, there may be central staffing for waste/recycling collection. You will need to work with these personnel to ensure that materials are collected efficiently.



7. Ask for assistance from custodial staff in monitoring the program. Have them inform you of areas with major contamination problems or where employees are not participating, and follow up with improved recycling education in these areas.
8. If appropriate, make sure that your grounds crew knows to keep yard waste separate from other waste.
9. Ask your waste hauler for advice about keeping recyclables and wet waste separate. Depending on the company's trucks and equipment, your hauler may want to give you separate containers for trash and recyclables.
10. Remind employees to keep food waste out of recycling containers and trash. Food waste should be handled separately from trash and recyclables.

For further information...

The following fact sheets are available from the City of Harrisburg's Department of Public Works:

Recycling at Work: Information for Harrisburg Businesses and Institutions	
Developing a Recycling Program at Work	Recycling in Hotels & Motels
Conducting a Waste Assessment	Recycling in Manufacturing & Warehouse Operations
Recycling in Hospitals & Health Care Institutions	Recycling in Retail Operations
Recycling in Office Buildings	Recycling in Schools, Colleges and Universities
Helping to Solve Solid Waste Problems in Your Business or Institution	
Recycling in Apartments & Condominiums	Recycling at Outdoor & Special Events

To obtain one or more of these fact sheets, contact:

City of Harrisburg
Department of Public Works
1690 S. 19th Street
Harrisburg, PA 17104
(717) 236-4802
Fax (717) 236-9051



For more detailed information about implementing a waste reduction and recycling program in your workplace:

Visit the Pennsylvania Department of Environmental Protection website at www.dep.state.pa.us, click on the "Recycling Works" logo, and go to "Commercial Recycling."

The Professional Recyclers of Pennsylvania (PROP) has published "Developing a Waste Reduction and Recycling Program for Commercial, Institutional, Industrial and Municipal Establishments." To obtain a copy, contact PROP at:

P.O. Box 25
Bellwood, PA 16617
(814) 742-7777
Fax (814) 742-8838
e-mail prop@epix.net
www.proprecycles.org