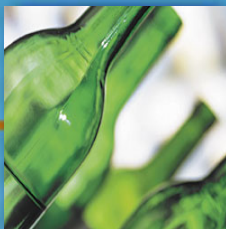


The Pennsylvania Recycling Markets Center



RMC

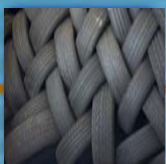


Agricultural Advisory Board
February 21, 2007



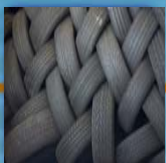
Key Points

- Introduction to RMC
- RMC Initiatives & Featured Companies
- Q & A



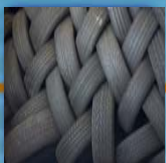
RMC - What and Where

- DEP funded
- 501(c)(3) non-profit
- 9-member board plus 4 *ex-officio* members
- Penn State Harrisburg
- Partnering Organizations
- Information Management System, RIMS
- www.parmc.org



RMC - Priorities

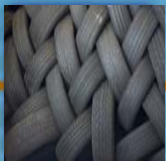
- Proactive and Reactive
 - Demand-Pull Model
- Market the Center
- Channel Resources
 - External – Internal
 - Facilitate linkages
 - Partnerships
- Focus on Priority Materials
 - Organics
 - Plastics
 - Glass
 - Tires
 - Electronics Recovery



RMC – Project Highlights

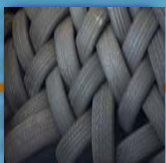
■ Plastics

- Agricultural Film Plastics
- Pandya Plastics
- Cougles/Everlast Plastic Lumber
- Innovative Rail Concepts



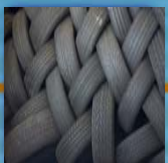
Featured PA Companies

- Everlast Plastic Lumber



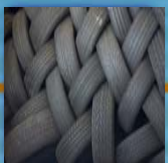
Featured PA Companies

- Everlast Plastic Lumber



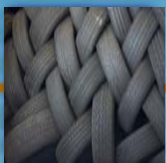
Featured PA Companies

- Everlast Plastic Lumber



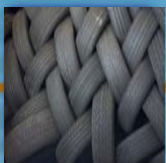
RMC – Project Highlights

- Organics
 - Food Waste Composting Feasibility Evaluation
 - GIS Recycling Supply Chain Project
 - Biofuels assistance projects
 - Chair of PROP Organics Committee
 - Stakeholder Forum
 - PFMA
 - Pellet Consortium



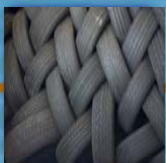
Featured PA Companies

■ Laurel Valley Farms



RMC – Active Project Highlights

■ Glass Mound Construction



RMC – Contact Us

Joanne Shafer, 814.238.6649, jshafer1@uplink.net
RMC Board of Directors, Chair

Carl Hursh, 717.948.6660, cuh6@psu.edu
Pa.DEF Recycling Markets Center Liaison

Bob Bylone, 717.948.6729, rjb128@psu.edu
Recycling Program Manager

Melanie Espenshade, 717.948.6660, mxe10@psu.edu
Administrative Assistant

Jack Himes, 717.948.6745, jlh587@psu.edu
Eastern PA PENNTAP Recycling Technical Specialist

Pete Previte, 724.994.6197, pmp12@psu.edu
Western PA PENNTAP Recycling Technical Specialist
Penn State New Kensington

